

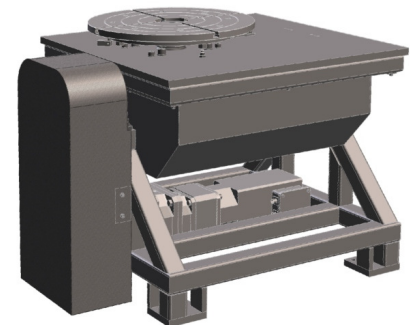
THERMAL SPRAY COMPONENTS

Tilting Turntable KT45L

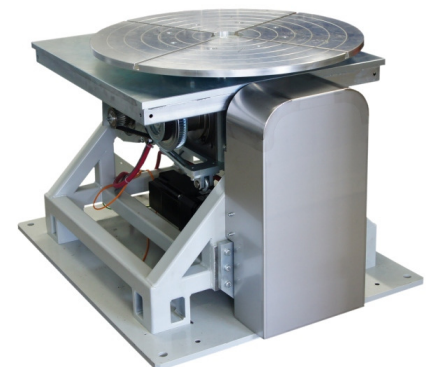
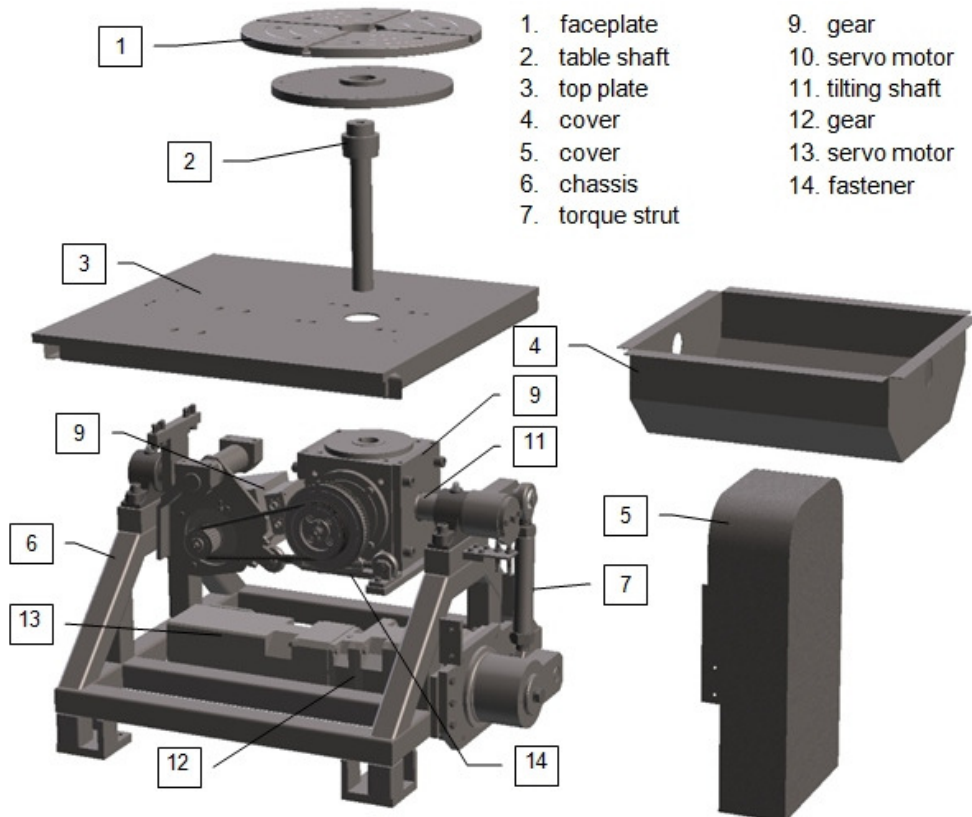
The basic thermal spray process handling system configuration exists typically of an industrial robot for the manipulation of the gun and a turntable as a work piece handling.

The model KT45L turntable is designed for thermal spraying operations controlled by a robot and provides rigidity for the work piece rotation which thermal spray operations require. It is a further development of the well established KT45. The KT45L turntable is equipped with a torque strut instead of a chain to avoid any allowance for clearance in the tilting movement. The faceplate rotates at a speed of up to 300 rpm and its tilting angle is $\pm 45^\circ$. The heavy-duty steel frame is equipped with shells and stabilizer jacks.

The lightweight faceplate of $\varnothing 600\text{mm}$ (800mm/1000mm) has four slots for fixtures and jaw-chuck attachments. Regenerative braking ensures quick stopping. In an emergency stop condition, or an input power loss, the faceplate stops and locks in position. The rotation speed fits to typical thermal spray parameters - for the Plasma, Flame and HVOF processes.



Maximum load is 250kg



Maximum load is 250kg

Switzerland

AMT AG
Badstrasse 34
CH-5312 Döttingen

Tel.: +41 (0)56 245 9010
Fax: +41 (0)56 245 9011

Japan

Shida International Co. Ltd.
4-60-10 Minamidai, Nakano
164-0014 Tokyo

Tel.: +81 353 42 1377
Fax: +81 353 42 1378

Singapore

AMT AG Ltd.
19 Loyang Way 02-04
Changi Int'l Logistics Center
Singapore 508724

Tel.: +65 6543 3700
Fax: +65 6543 3705

Germany

KHW Beschichtungstechnik
Hamsterweg 10a
D-65307 Bad Schwalbach

Tel.: +49 (0)6124 7020 962
Fax: +49 (0)6124 7020 963